



We see transportation differently





About Us

We are a research organization under the auspices of the Ministry of Transport. We shape the future of transportation, making it safe, modern, sustainable, and efficient.

We conduct comprehensive research and development in transportation across natural and social sciences, as well as engineering and technology.

Our goal is to build a functional transportation system that benefits society as a whole.



Our Core Values

01



INDEPENDENT EXPERTISE

We are always impartial and unbiased in our work. Our decisions and recommendations are based solely on our research.

02



INNOVATIVE SOLUTIONS

We focus on research that pushes boundaries and seeks solutions for the future needs of transportation.

03



QUALITY SERVICES

We create products and services that serve the public and are consistent and reliable.

04



COMPREHENSIVE APPROACH

Our multidisciplinary approach enables us to address complex problems that require a wide range of expertise and skills

Advancing Global Research

We collaborate with numerous national and international research institutions, universities, and private businesses.

Thanks to our active involvement in various international professional associations, we have the opportunity to share and gain knowledge, experience, and foster international cooperation.

Feedback is essential for our work and its further development. We obtain it primarily through presentations of our research results at international conferences and through papers published in prestigious scientific journals.



**GLOBAL
COLLABORATION**

**COOPERATION
WITH THE
PRIVATE SECTOR**



**SHARING
KNOWLEDGE**

**UNIVERSITY
INVOLVEMENT**



FEEDBACK

**INTERNATIONAL
CONFERENCES**



**PUBLICATIONS
IN INTERNATIONAL
JOURNALS**

**COLLABORATION
WITH INTERNATIONAL
INSTITUTIONS**



We are shaping the future of transportation

We focus on a wide range of transportation areas that we can flexibly connect to provide comprehensive services based on impartial and unbiased research.



EFFICIENT TRANSPORTATION AND PLANNING

Transportation modelling and sustainable mobility plans



TRANSPORTATION SAFETY

Strategic documents, accident research, safety management tools, and engineering safety measures



PEOPLE IN TRANSPORTATION

Research on the behaviour and needs of people in transportation, rehabilitation programmes



TRAFFIC ENGINEERING AND CONSTRUCTION

Traffic surveys, analyses, models, and traffic engineering solutions



CLEAN AND SUSTAINABLE MOBILITY

Air and noise pollution measurements, noise and emission modelling, formulation of measures



TRANSPORTATION INFRASTRUCTURE DIAGNOSTICS

Sustainable transportation infrastructure and testing of building materials



INTELLIGENT TRANSPORTATION SYSTEMS

Technical solutions to improve traffic flow, autonomous systems, and implementation of ITS elements



INTELLIGENT TRANSPORTATION SYSTEMS

Traffic education, training for professional drivers, and specialized courses in various areas of transportation

Over 70 Years of Expertise

On August 1, 1954, the Transport Research Institute was established in Prague (1954-1971), focusing on complex transportation problems, rail and road transport, and transport infrastructure. The beginning of centrally controlled and conceptually oriented transport research in Czechoslovakia.



VÚD-1 device for measuring pavement roughness

In 1986, all six Brno workplaces were relocated to new premises.



Dutch SWOV director Mathijs Koornstra and TRC director Josef Mikulík

On July 1, 1996, the (TRC) became the only contributory organization of a scientific-research nature under the Ministry of Transport and simultaneously took over selected activities from two other development centres.



Presentation of a certificate by Qualiform

1954 – 1971

1972 – 1979

1980 – 1989

1990 – 1995

1995 – 2000

2000 – 2005



Test section of flexible pavements in Tišnov

On January 1, 1972, the Transport Research Institute in Žilina was founded as the leading workplace for scientific and technical development in the area of complex transportation problems in Czechoslovakia.



TATRA RUNWAY TESTER device for measuring surface roughness

On December 31, 1992, the Transport Research Centre (TRC) was established in Brno, with Ing. Josef Mikulík, CSc. as a director. From that moment on, we had a clear vision: to build an objective, commercially independent research organization providing expert support to the Ministry of Transport.



CDV building on Vinohrady Street in Brno

In 2001, we implemented a quality system according to the ČSN EN ISO 9001:1995 standards and established a branch office in Olomouc focused on cycling and pedestrian transport.



Handing over the institute's leadership, Karel Pospíšil (left), Josef Mikulík (right)

Between 2011 and 2014, the construction of the Transport R&D Centre with modern research facilities and laboratories was carried out.



TRC director Jindřich Frič

Air quality measurement with the Airpointer system



Autonomous minibus at the URBIS fair, appreciated by representatives of the European Commission

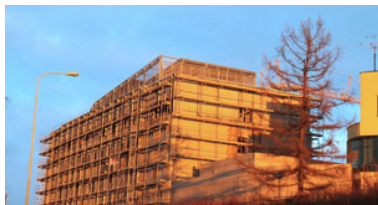
2006–2010

2011–2015

2016–2020

2021–2025

On June 1, 2006, we transformed the legal form of the TRC into a public research institution. On July 1, 2007, Doc. Ing. Karel Pospíšil, Ph.D., MBA was appointed director.



New building under construction

Between 2016 and 2020, we obtained a project within the National Sustainability Programme to support research, experimental development, and innovation. On April 4, 2016, Ing. Jindřich Frič, Ph.D. was appointed director.

The beginning of this period was marked by the ongoing COVID-19 pandemic. On February 1, 2021, Ing. Jindřich Frič, Ph.D. was reappointed director. On September 6, 2021, we won the HR Excellence in Research award, the mark of quality in human resources management in the research and academic sphere.





Our Accredited Laboratory

We carry out tests on concrete and asphalt road layers, including core sampling, aggregate testing, road surface roughness measurements, pavement property measurements using ground-penetrating radar, geotechnical laboratory and field soil tests, noise measurements and modeling, ambient air quality measurements (emissions), determination of water quality indicators, determination of selected indicators in solid matrix and asphalt mixtures, tests of traffic signs and road markings, and determination of helium in hydrogen fuel.

Our laboratory services are further complemented by a range of tests conducted in a non-accredited regime in the field of transport infrastructure and the environment. Our research is also carried out in the accident research laboratory and the sociological laboratory.



**TRANSPORTATION
INFRASTRUCTURE
LABORATORY**



**ENVIRONMENTAL
LABORATORY**



**TRAFFIC SIGNS
LABORATORY**



We are a certified expert institution

We are registered on the list of expert institutions in the following key transportation areas:



AIR PURITY
Impact of transport on air quality and purity



TECHNICAL FIELDS
Measurement and evaluation of noise pollution from transport



TRANSPORT
Urban and road transport



CONSTRUCTION
Transport and engineering structures, building materials



PSYCHOLOGY
Transportation psychology

We Translate Research into Practice

All our research is conducted with the idea of its application in practice. It is important for us that the results of our research serve the general public in the form of products and services.

The commercialization of our results is handled by the Knowledge Transfer Centre, which helps create new research and commercial opportunities and ensures cooperation with partners and the application sphere.

[Online Offer of Our Services and Products](#)



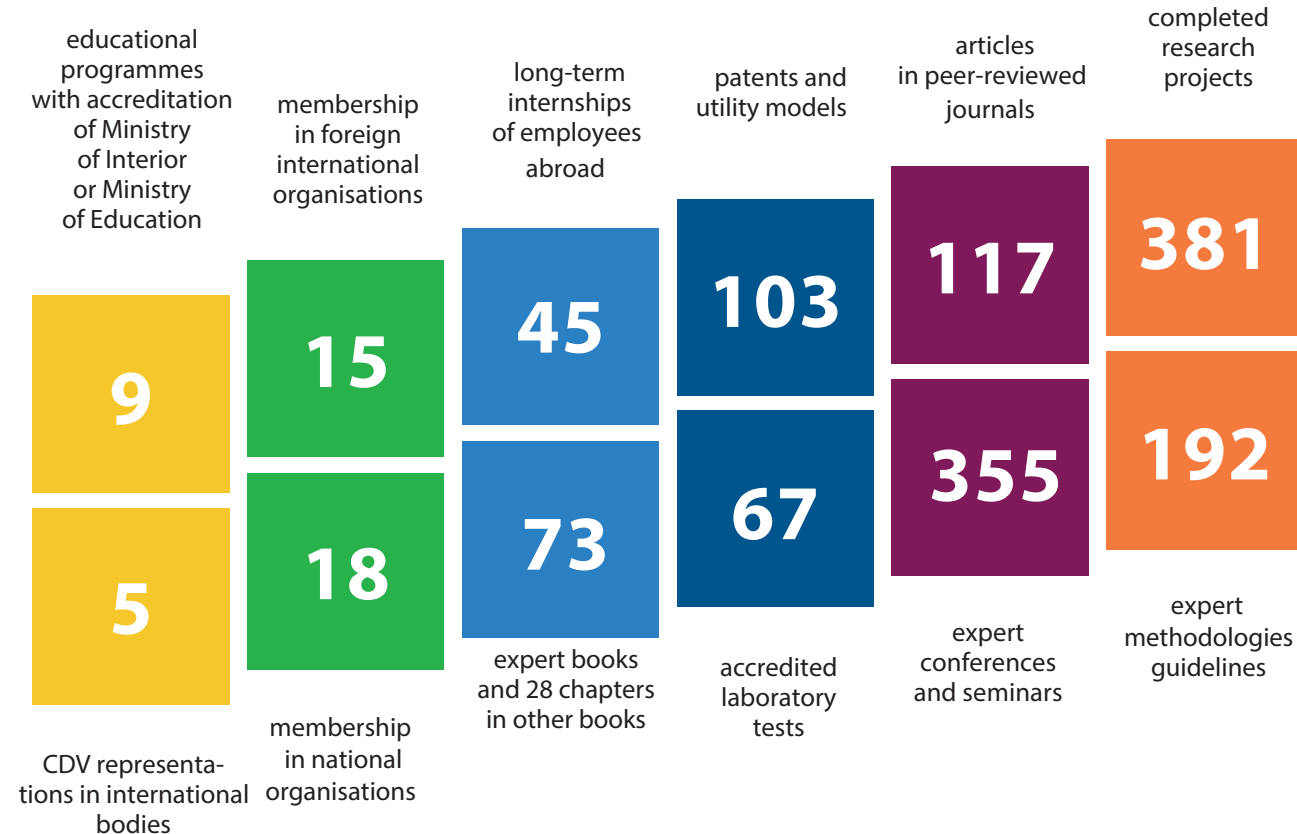
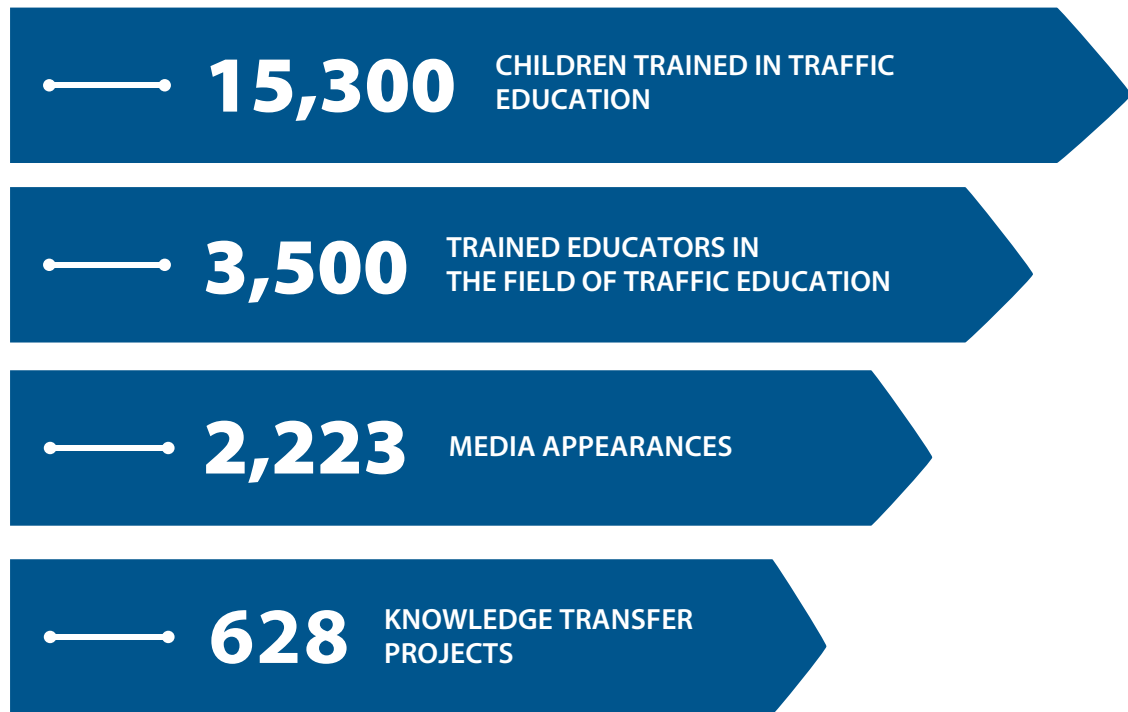
shopcdv.cz/en

Example of Services Provided

- Creation of a sustainable mobility plan
- Preparation of a regional transport plan
- Traffic behaviour models
- Assessment of the impact of transport on the environment
- Various types of measurements, laboratory tests and analyses
- Conducting road safety inspections and audits
- Design of telematics solutions for highways, roads and local roads

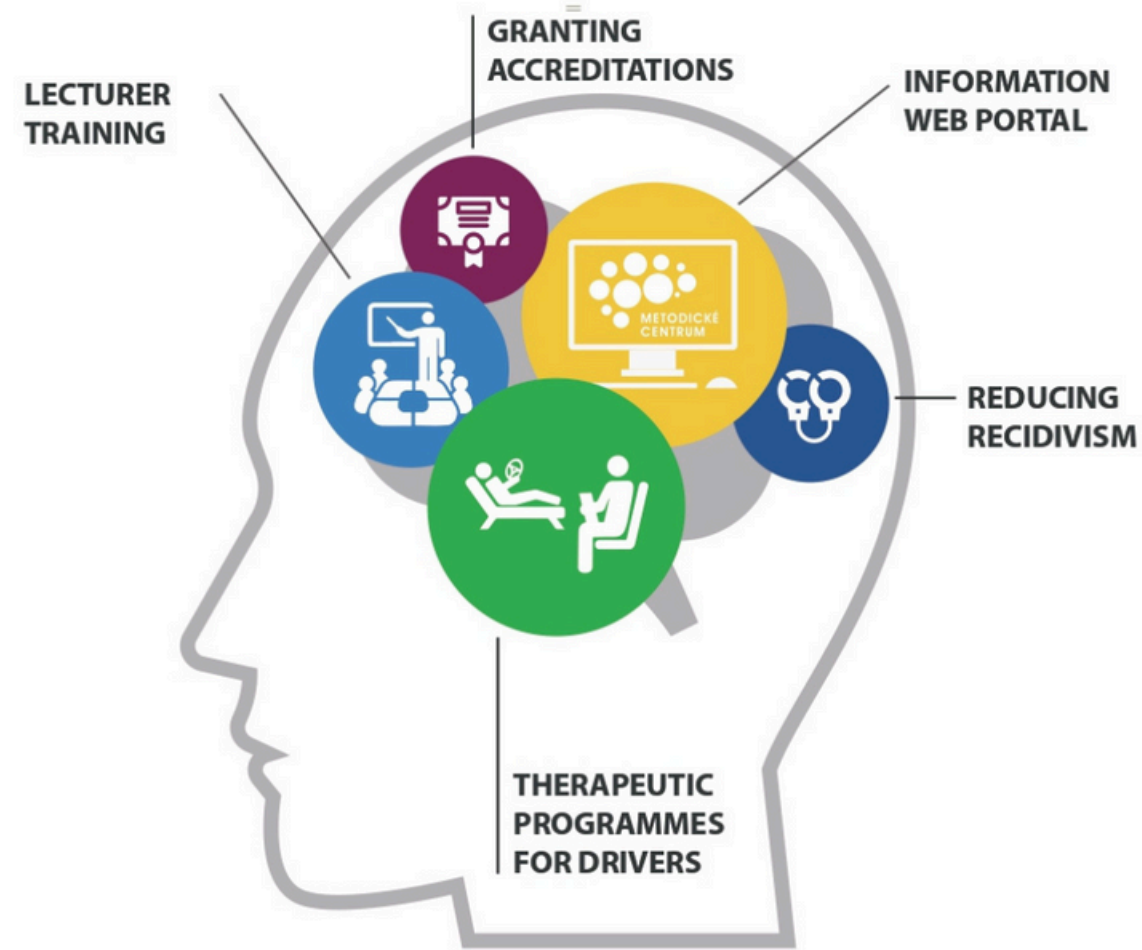


Our Results



Helping to Prevent Risky Driver Behaviour

The Methodological Centre was established with the aim of reducing risky driver behaviour in transport through therapeutic programmes. We currently provide methodological guidance for these programmes for drivers, initial and ongoing training for lecturers, granting and revoking accreditations, monitoring the provision of programmes, and operating an information web portal.





Líšeňská 33a 636 00 Brno | +420 541 641 711 | info@cdv.cz | cdv.cz